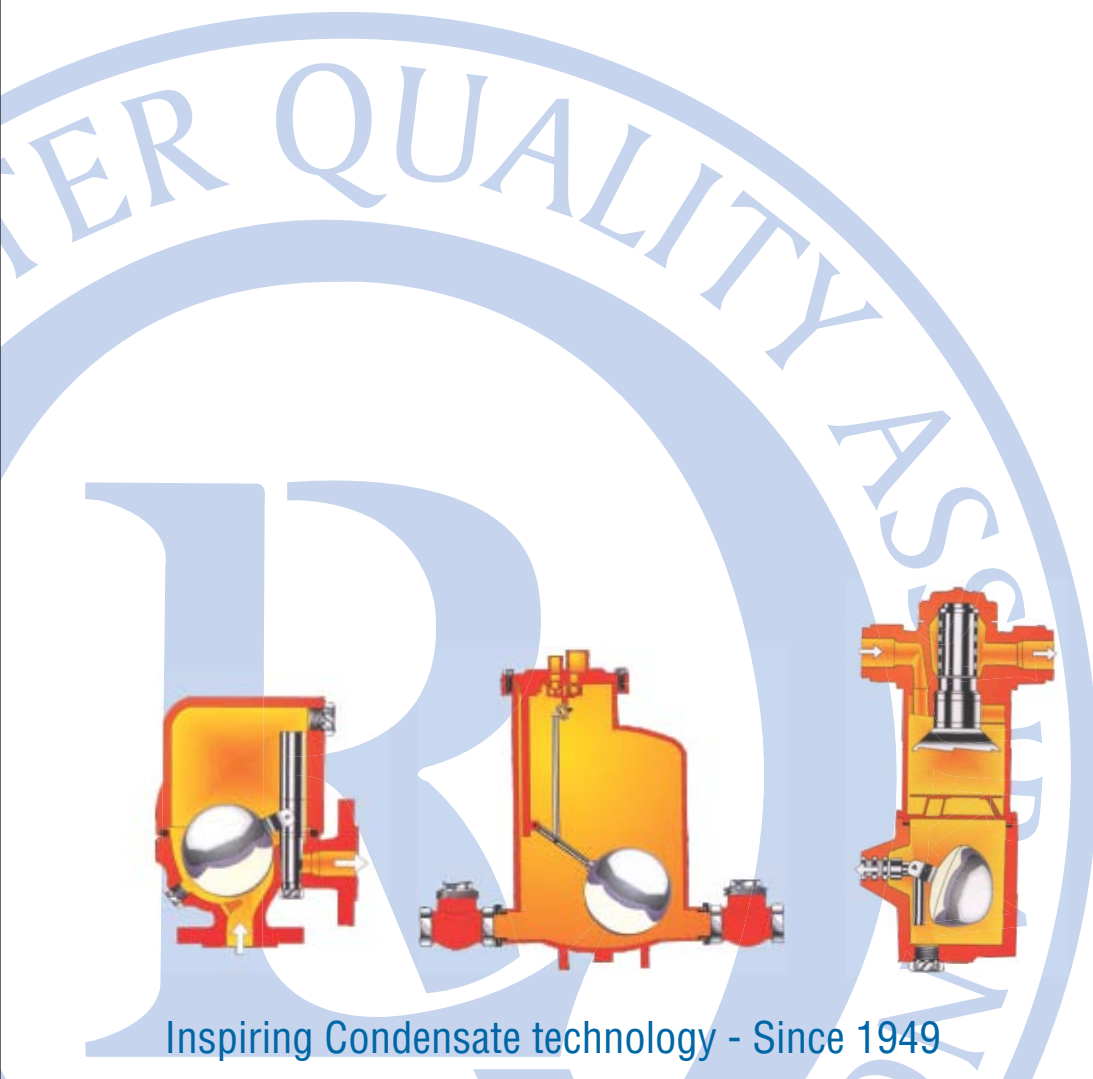


## Product overview



Inspiring Condensate technology - Since 1949

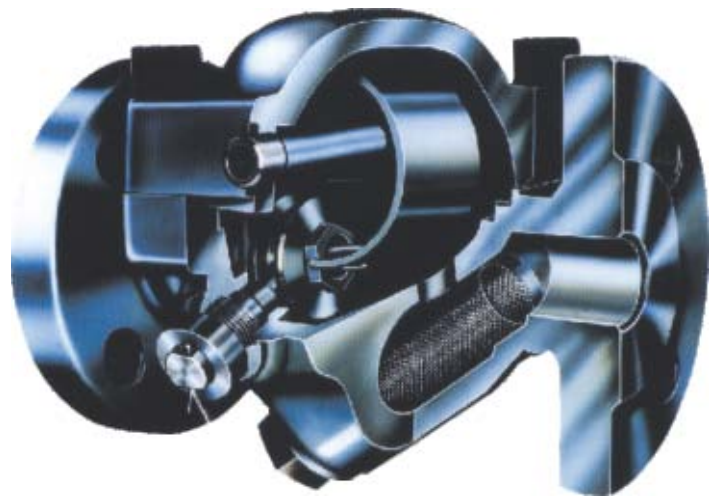


Condensate steam traps  
Condensate pumps  
Condensate recovery units  
Condensate compensators

Automatic vent valves  
Feed and drain control  
Sight glasses  
Automatic drains

Fine dryer/separators  
Dirt strainers  
Non-return valves  
Additional equipment

## Introducing ourselves



RIFOX - Hans Richter GmbH Spezialarmaturen was founded in February 1949 by Hans E. Richter and has consistently made advances and also decisively codetermined developments in condensate technology. RIFOX has become a world - renowned company particularly concerning the manufacture of float condensate steam traps and automatic vent valves for highest pressure classes and temperatures of -196°C up to 530°C.

The company which is now part of international Virgo group has about 40 employees and coworkers.

In-house production with an experienced team not only guarantees high quality standards but also rapid and flexible reaction to customer requirements coupled with short delivery times.

Numerous designs and patents from Mr. Hans E. Richter have aided RIFOX in becoming an innovative company with a high quality and robust delivery programme. The purpose of condensate traps and automatic water drains is to drain off condensate and liquids from a steam or gas network without the loss of steam or gas. RIFOX can offer various systems in this field to provide effective drainage.

One example is the rotary slide valve control system for float-actuated condensate traps.

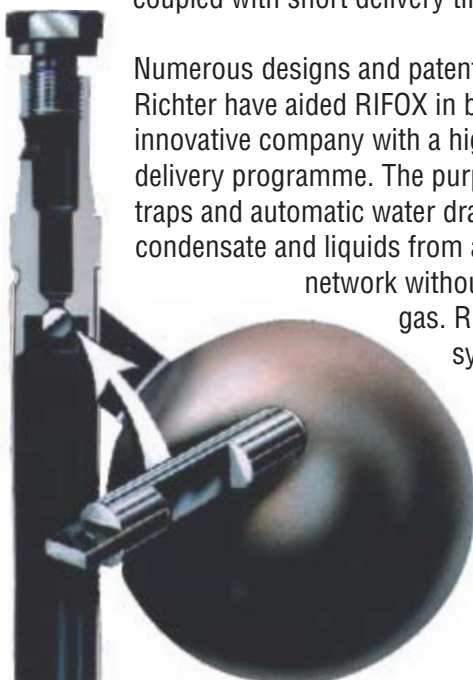
This system has just one moving part which also acts simultaneously as a regulating and shut - off device. This minimises wear so that the RIFOX condensate trap can offer its services, in many cases over a period of decades, with a virtually constant seal.

RIFOX has gained a great deal of technological experience over the last few years, particularly in the Chemical Industry and particularly for the widest possible range of applications at the highest pressures and for the widest range of media . Various types of condensate steam traps can be manufactured in the following types of stainless steel: 1.4104, 1.4571, 1.4581, 1.4552, Hastelloy C4, Duplex 1.4462 and Titan.

RIFOX offers a comprehensive programme of products covering all aspects of working with condensates such as condensate pumps, vent valves, sight glasses, dirt strainers, non-return valves, dryers and many other fittings.

We are also represented on the internet. You are invited to visit our website at: [www.rifox.de](http://www.rifox.de). Graphic animations explain the principle of condensate drainage.

Virtually the whole delivery programme can be called up there . Whether datasheets or installation instructions, you can quickly and comfortably download or print out documents using the Adobe Reader.



**RIFOX - Hans Richter GmbH Spezialarmaturen**

D-28082 Bremen • Postfach 11 02 45 • Telefon +49 421/4 99 75-0 • Fax +49 421/499 75-40  
[www.rifox.de](http://www.rifox.de) • [contact@rifox.de](mailto:contact@rifox.de)

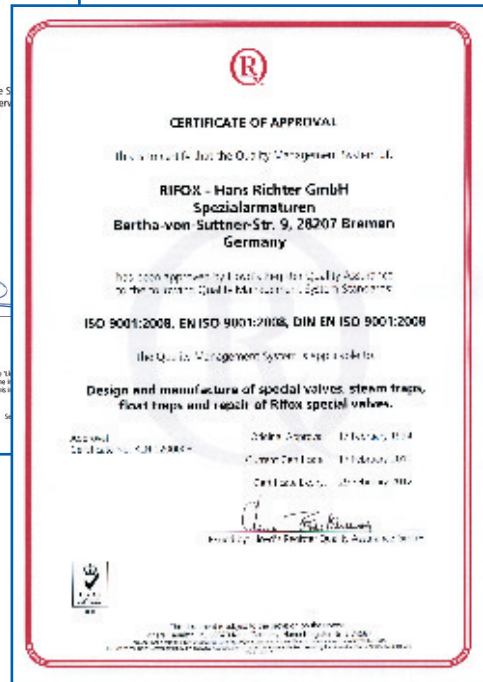
## Quality and safety - key aspects for all our products

The phrase "install and forget" always places high demands on RIFOX as a solution provider for both, series manufacture and special designs. Our proven principle of supplying products that offer both, high quality and robustness is underpinned by the company's certification to DIN EN ISO 9001 as well as the design and classification of the products according to the Pressure Equipment Directive PED 97/23/EC.

The Pressure Equipment Directive (PED) is one of the guidelines issued by the European Parliament and Council with the goal of harmonizing national regulations, of reducing trade barriers within the Community, and of achieving uniform approval and testing conditions. The PED is a legislative provision which regulates the introduction into the market of pressure equipment operating at pressures greater than 0.5 bar. The Pressure Equipment Directive, which came into effect on 29 November 1999, is built up on "essential safety requirements" (ESRs). Since 29 May 2002, pressure equipment not complying with this directive is barred from being introduced into the EU market.

The PED takes precedence over national regulations: however, these codes can still be applied to the extent that they meet the requirements of the PED. All types of pressure equipment and fittings must be subjected to a conformity assessment. Valves with a nominal size not exceeding DN 32 fall primarily under Article 3, Section 3, and must not bear the CE marking.

Pressure equipment is classified into categories I to IV, depending on the potential danger arising from the operating medium (Fluid Group 1 and 2) and the product of pressure and volume or of pressure and nominal size (PS x V, PS x DN). These categories are in turn assigned to modules which define the quality assurance requirements. Category I is, for example assigned to module A, which describes the internal production control. Category III refers to the modules B1 + D or H, amongst others. Some of the RIFOX valves and fittings fall under Article 3, Section 3, and must not bear any CE marking. The vast majority of our systems are, however, in categories I to III, with special sizes and types placed in the highest category IV with module H1. The RIFOX quality assurance system is certified according to the applicable requirements listed in Annex III (modules D1, H and H1, and B1 or B or G). All valves and fittings falling under categories I to IV are given CE marking. A declaration of conformity is also issued.

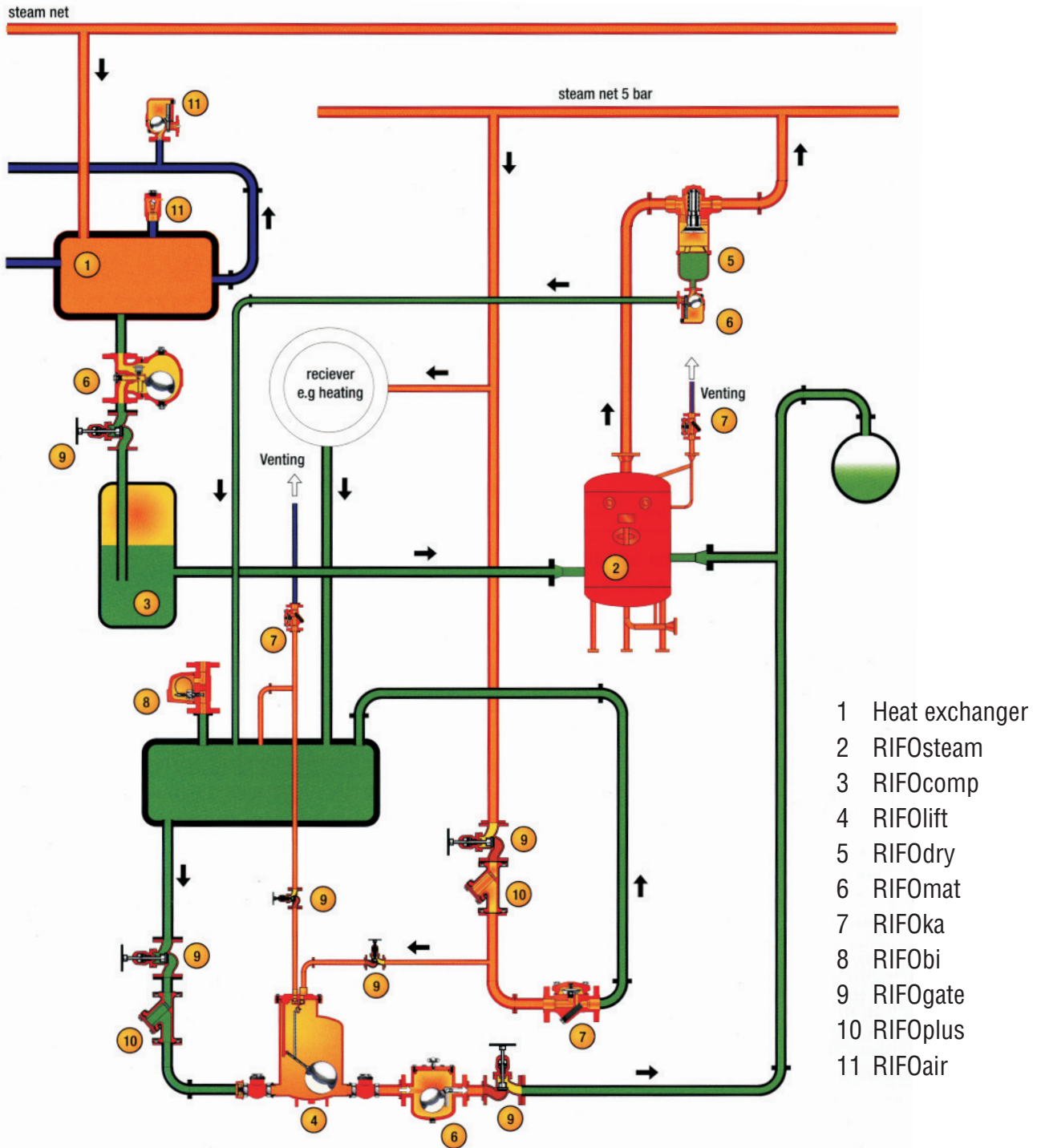


**RIFOX - Hans Richter GmbH Spezialarmaturen**

D-28082 Bremen • Postfach 11 02 45 • Telefon +49 421/4 99 75-0 • Fax +49 421/499 75-40  
www.rifox.de • contact@rifox.de

# Condensate system

2



To remove condensing or transporting moisture from liquids, from steam, compressed air and gas systems; the condensate which accumulates must be drained away and securely blocked off against the gas or steam side while taking account of the technical conditions prevailing.

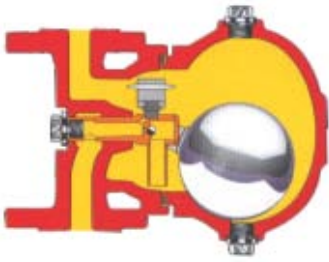
Selection, design and installation of condensate

traps for a plant is extremely important for trouble-free operation. The main equipment used in condensate drains consists of float and thermally controlled condensate traps. The thermally controlled condensate traps can however, only be used for steam equipment due to their physical properties. Float condensate traps are mainly used for the broad field of other applications.



**RIFOX - Hans Richter GmbH Spezialarmaturen**

D-28082 Bremen • Postfach 11 02 45 • Telefon +49 421/4 99 75-0 • Fax +49 421/499 75-40  
www.rifox.de • contact@rifox.de



## RIFOmat

control modes available

### Function

Changes in level makes the rotary slide valve to turn by means of the float and the cross-sectional area of the nozzle aperture open and close.

### Volume behaviour

Condensate throughput is continuous. Adaptation to the fluctuations of flow is made by the level. No hold up of condensate.

### Pressure behaviour

Even with low differences in pressure very good discharge output. Indifferent to counter pressure. Fluctuations in pressure not influencing function.

### Temperature behaviour

Condensate is let off at boiling point or slightly subcooled.

### Venting

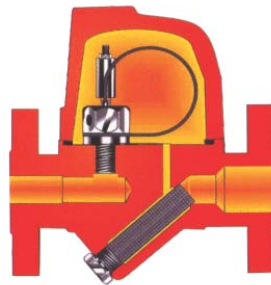
Additional aeration is necessary for steam.  
a) manually by control valve  
b) vent jet  
c) automatic thermal venting

### Evaluation

Universal quick-acting trap for hot and cold media. High discharge output. Steam/ gas lock by submersion pipe and condensate receiver. Additional aeration required for steam if necessary air rotary pipe for air/ gas.

### Application examples

- Drainage from compressed air and pressure gas systems
- Heat exchanger
- Double wall
- Steam distributor
- Piping, large nominal diameter
- Drainage from pipes



## RIFObi

thermostatic control

### Function

Due to differences in temperature, change of bending out of bimetal. Consequently, opening and closing of valve.

### Volume behaviour

Continuously and intermittently according to quantity of condensate and set undercooling. Adaptation to fluctuations in quantity is made indirectly and is independent from set undercooling.

### Pressure behaviour

Can already be used with low differential pressure. Therefore, discharge output low. The valve opens and closes in fixed pressure ranges.

### Temperature behaviour

Condensate will be retained and discharged according to setting 15°- 90° degrees C in undercooled state. Attention! Flooding of heating surfaces possible.

### Venting

Very good steam trap. Automatic starting and continuous deaerator. When installed as steam trap, set control to low undercooling.

### Evaluation

More or less sluggish trap according to set undercooling. For a small flow rate of condensate with simultaneous venting function.

### Application examples

- Where steam condensate is to be discharged with undercooling
- Ramp heating pipes on product pipes, reaction vessels, etc.



## RIFOKa

thermostatic control

### Function

By evaporation of the alcoholic liquid contained in the capsule, closing of valve.

### Volume behaviour

Continuously and discontinuously. Adaptation to fluctuations in volume with little and more retardation, according to type of capsule bellow.

### Pressure behaviour

Can already be used when differences are small. Insensitive to fluctuations in pressure.

### Temperature behaviour

According to filling of capsule, condensate will be discharged slightly undercooled (up to 3° C) till 40°.

### Venting

Ideal steam chamber vent. Automatic starting and continuous venting, when installed as steam trap.

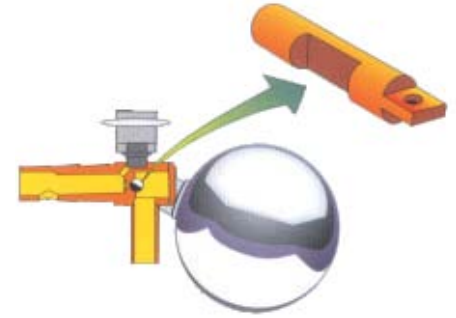
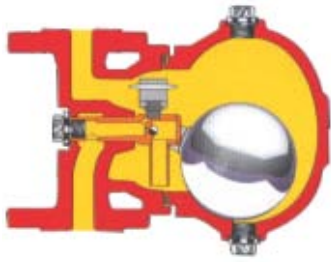
### Evaluation

More or less quick-acting trap when temperature is steady, volume of condensate is small. Excellent venting & small in size. The condensate is removed in an only slightly or a strongly cooled state depending on the type of capsule. Slight cooling prevents hold up of condensate.

### Application examples

- Draining of pipes
- Heat tracings
- Steam distributors
- Small heat exchangers
- Ideal as venting and aerating for pipe systems

# Float controlled steam traps



4

## RIFomat

Steam trap

## Rotary - slide-valve control

### Application

Draining of steam, gas and liquid chambers.  
Also ideal for draining lines.

### Installation Position

Horizontal, vertical or angular,  
entry from above, exit from the side

### Pressure range

PN 16 to PN 250

### Connections sizes

Flange: DN 15 to DN 100  
Welded ends: DN 15 to DN 100  
Socket threads: G 1/2" to G 1"  
ANSI 1/2" to 4"

### Features

- Simple alteration of flow directions
- DIN-construction dimensions
- Rotary slide valve control system
- Low storage costs = cost reduction
- Compatible and uniform

- Only one moving point
- Simple systems, few parts
- Insensitive to contamination
- Extremely long working life, little wear
- Extremely low maintenance
- Proportional control action
- Independent of pressure and temperature
- Exact, impact free and silent condensate discharge
- No whirlpool effect, consequently no loss of steam
- More than 100.000 times successful

### Housing material

Spheroidal graphite iron, cast steel, welded steel, stainless steel, Hastelloy, Titan, Duplex 1.4462

### Additional Equipment

- Drain plug
- Lifting lever
- Reflection -type water level indicator
- Non-return valve
- Control valve
- Various thermal automatic venting devices

### Capacity

Up to 75 t/h

## The model Vario, one condensate trap for 4 different directions of flow

## Method of functioning

### Vario-SO

For installation in vertical pipes.  
Passage from top to bottom.

### Vario-WR

For installation in horizontal pipes.  
Passage from right to Left.

With the **RIFomat** float condensate trap the change in level causes turning of the rotary slide valve via the float and this opening and closing of the cross-sectional leads to area of the nozzle aperture.



The **RIFomats** are universal rapidly reacting drains for hot and cold media with a high discharge output. A steam/gas lock is achieved by means of the submerged pipe and the condensate receiver and thus secures against losses. Automatic RIFOk ventilation which is essential for steam can be integrated in.

### Vario-SU

For installation in vertical pipes.  
Passage from bottom to top.

### Vario-WL

For installation in horizontal pipes.  
Passage from left to right.

The **RIFomat** rotary slide valve float control is also obtainable in a absolutely gas-tight design for special applications.



RIFOX - Hans Richter GmbH Spezialarmaturen

D-28082 Bremen • Postfach 11 02 45 • Telefon +49 421/4 99 75-0 • Fax +49 421/499 75-40  
www.rifox.de • contact@rifox.de



## RIFOlevel

Float controlled drain controller

### ■ Usage

Securing an upper liquid level

### ■ Pressure range

PN 16 and PN 40

### ■ Connection sizes

Flange: DN 15 to DN 50, ANSI ½" to 1"  
Socket threads: G ½" to G 1"

### ■ Housing material

Spheroidal graphite iron, welded steel, stainless steel, Aluminium permanent mould casting or with Levasint plastic coating

### ■ Capacity

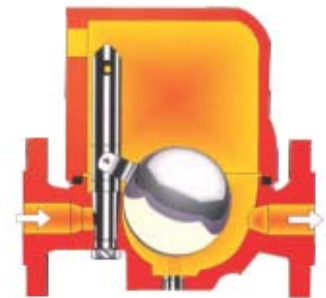
Up to 15 t/h

## RIFOlevel

A particularly compact and dirt resistant design with an internal float.

The rotary slide valve control system guarantees an extremely reliable system of operation with a very long working life for the highest sealing effect.

The rotary slide valve is also, at the same time, the controlling and shut-off device.



## RIFOlevel

Float controlled feed controller

### ■ Usage

Securing a low liquid level

### ■ Pressure range

PN 16 to PN 40

### ■ Connection sizes

Flange: DN 15 to DN 50, ANSI ½" to 1"  
Socket threads: G ½" to G 1"

### ■ Housing material

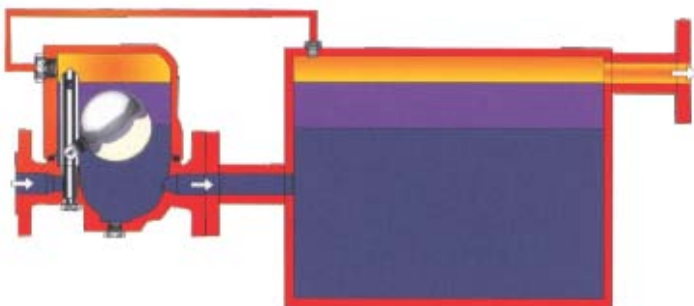
Spheroidal graphite iron, welded steel, Niro, aluminium permanent mould casting or with Levasint plastic coating

### ■ Capacity

Up to 15 t/h

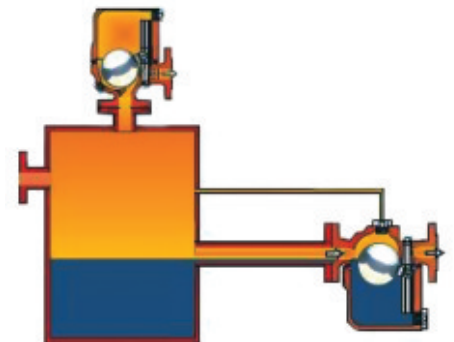
## RIFOlevel

Float controlled feed control unit



## RIFOlevel

Float controlled drain control unit



## Thermostatic / Thermodynamic steam traps

6



### RIFObi

Thermostatic bimetal steam trap

#### ■ Usage

- Draining for heat tracing equipment, draining pipes on heating systems

#### ■ Pressure range

PN 16, PN 40, PN 63, PN 100

#### ■ Connection sizes

Flange: DN 15 to DN 50,  
ANSI ½" to 2"  
Welded ends: DN 15 to DN 50  
Socket threads: G ½" to G 1"

#### ■ Housing material

P 250 GH (C 22.8)  
16 Mo 3

#### ■ Capacity

Up to 5 t/h

#### ■ Installation position

Horizontal or vertical

#### ■ Additional equipment

- Control unit for special conditions



### RIFOkA

Thermostatic capsule steam trap

#### ■ Usage

- Draining pipes on heating systems
- Draining of heat tracing equipment
- Steam chamber vent

#### ■ Pressure range

PN 16 to PN 40

#### ■ Connection sizes

Flange: DN 15 to DN 50,  
ANSI ½" to 2"  
Welded ends: DN 15 to DN 50  
Socket threads: G ½" to G 1"

#### ■ Housing material

P 250 GH (C 22.8)  
Niro

#### ■ Capacity

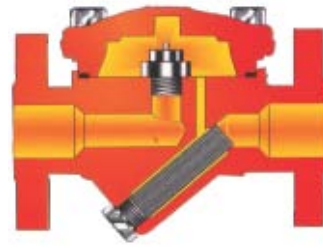
Up to 3 t/h

#### ■ Installation position

Horizontal or vertical

#### ■ Additional equipment

- Non-return valves
- Slip steam nozzle



### RIFOjet

jet steam trap

#### ■ Usage

- For multistage pressure networks
- Turbine start up water drain
- Draining of rotating cylinders
- Laundry machines
- Condensate systems without deep point draining

#### ■ Pressure range

PN 16 to PN 160

#### ■ Connection sizes

Flange: DN 15 to DN 50,  
ANSI ½" to 2"  
Welded ends: DN 15 to DN 50  
Socket threads: G ½" to G 1"  
Intermediate flange design:  
DN 15 to DN 50

#### ■ Housing material

According to design

#### ■ Capacity

Up to 3 t/h

#### ■ Installation position

Horizontal or vertical



### RIFOdyn

Thermodynamic steam trap

#### ■ Usage

- Draining vulcanizing machines
- Rotating cylinders
- Steam chambers without a drain deep point

#### ■ Pressure range

PN 16 to PN 63

#### ■ Connection size

Flanges and welded sleeves:  
DN 15 to DN 25, ANSI ½" to 1"

#### ■ Housing material

Stainless steel Niro 1.4571  
P 250 GH (C 22.8)

#### ■ Capacity

Up to 1.500 kg/h

#### ■ Function

A thermodynamic effect causes the valve head to close when there is steam present and to open when there is condensate present.

Evaluation heating surfaces are kept free of condensate. Automatic residual condensate draining on a switched off plant. Smallest constructional dimensions. Can be installed in any position. There is, however, a small amount of steam which leaks out (operating steam) under partial load due to the system used.



## RIFOlux

Condensate monitor

### ■ Usage

For checking for build-up of condensate for condensate traps and for visual inspection of flow streams

### ■ Pressure range

PN 16 to PN 40

### ■ Connection size

Flange: DN 15 to DN 100, ANSI ½" to 4"

### ■ Housing material

Spheroidal graphite iron, cast steel, welded steel, stainless steel, Hastelloy

### ■ Installation position

Horizontal or vertical

### ■ Additional equipment

- Borosilicate glass DIN 7080
- Drain plug



## RIFOdirt

Dirt stainer

### ■ Usage

For pre-separation of dirt particles upstream of condensate traps and other fittings

### ■ Pressure range

PN 16 to PN 160

### ■ Connection size

Flange: DN 15 -100, ANSI ½" to 4"  
Thread: ½" to 2"

### ■ Housing material

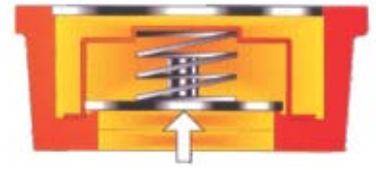
Spheroidal graphite iron, cast steel, stainless steel, 1.4408

### ■ Features

The sieve has the liquid flowing from inside to outside  
Dirt is gathered in the sieve, not in the housing  
This offers good and simple cleaning

### ■ Additional equipment

- An internal sieve made out of other materials and with various mesh widths
- Flange according to ANSI
- Welded ends



## RIFOstop

Non-return valve

### ■ Usage

To avoid backflows in condensate and liquid networks

### ■ Pressure range

PN 6 to PN 40

### ■ Connection size

Intermediate flange version for flanges DN 15 to DN 200 cast on centring collar

### ■ Housing material

2.1097, 1.7264, 1.4136, 1.4404

### ■ Constructional lengths

According to DIN EN 55B

### ■ Additional equipment

- Soft seal
- Special springs for existing
- Opening pressures
- Flange with projection and setback

## Dryer, filter, drain / vent valve



### RIFOdry

Fully automatic fine dryer and fine filter

#### ■ Usage

For compressed air gas and steam drying for a degree of filtration of the droplet moisture content over 98% of the micron level

#### ■ Pressure range

PN 16 and PN 25

#### ■ Connection size

Socket threads: G ½" to G 1"  
Flange: DN 15 to DN 300

#### ■ Housing material

Aluminium permanent mould casting, Spheroidal graphite iron, stainless steel 1.4571

#### ■ Capacity

Up to 3,000 t/h  
and an appropriate design

#### ■ Installation position

Horizontal or vertical

#### ■ Comment

An absolutely maintenance-free design

#### ■ Additional equipment

- ANSI flange
- Dirt drain screw
- with brackets or feet



### RIFomat

Drain trap

#### ■ Usage

Drain from compressed air and gas systems

#### ■ Pressure range

PN 16

#### ■ Connection size

G ½", DN 15

#### ■ Housing material

Aluminium permanent mould casting, Spheroidal graphite iron, stainless steel 1.4571

#### ■ Installation position

Horizontal, vertical or at an angle, which means entry from above exit from the side

#### ■ Additional equipment

- Dirt drain screw
- Easing lever
- Control valve
- Control unit in absolute gastight design



### RIFOair

Automatic vent valve

#### ■ Usage

For venting and aeration of liquid chambers such as pipes, filter and storage tanks

#### ■ Pressure range

PN 16 to PN 160

#### ■ Connection size

Flange: DN 15 to DN 100, ANSI ½" to 4"  
Socket threads: G ½" to G 1"

#### ■ Housing material

Spheroidal graphite iron, welded steel, Hastelloy, stainless steel 1.4581 or with plastic coating

#### ■ Capacity

Up to 1200 t/h

#### ■ Installation position

At the highest point of the plant with vertical entry from below

## RIFOsteam

Condensate recovery unit

### ■ Usage

For using the expansion steam.

Condensate recovery unit lower operating costs by using heat in the condensate. They can be used anywhere where expansion steam can be fed in to a low pressure steam network downstream of the condensate traps.

### ■ Pressure range

PN 16 to PN 40

### ■ Connection size

Flange: DN 15 to DN 150

### ■ Housing material

Carbon steel/NIRO

### ■ Output

Up to 15 t/h

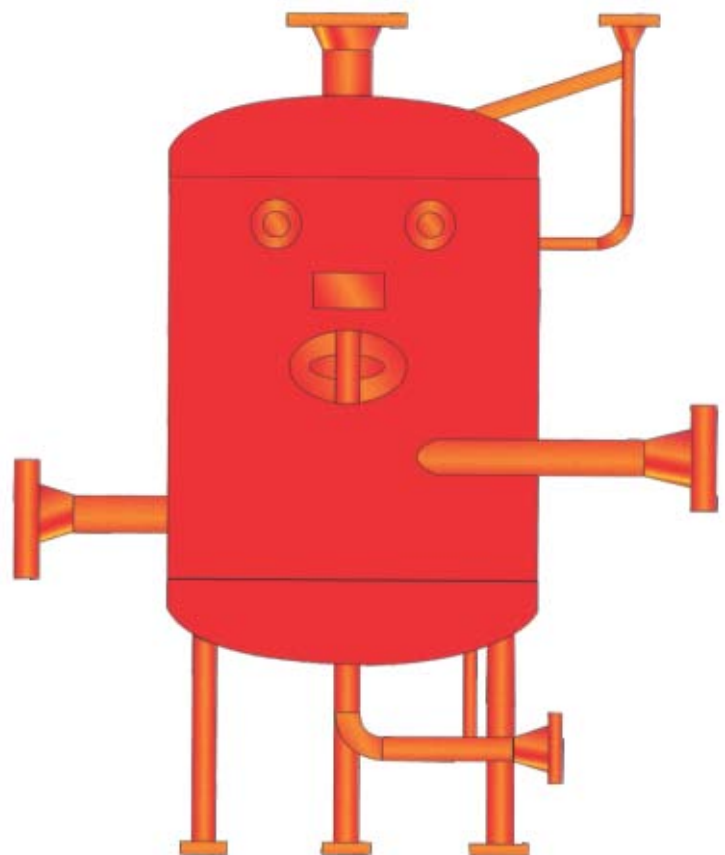
### ■ Function

In a condensate trap the condensate flows from the operating pressure to the low pressure level (condensate side).

Lowering of the pressure causes the energy content or the enthalpy of the boiling condensate to alter according to the steam tables, whereby part of the condensate passes again into the steam form (expansion steam or flash steam).

This process concerns a physical effect which should not be confused with fresh steam or with loss of steam. Partial evaporation of the steam condensate ejected from the condensate traps is substantial.

At 8 bar it is about 14% and at 20 bar about 22% of the condensate which again passes into the steam form. The flash steam is separated out in the condensate recovery unit and fed to the low pressure network. The condensate flows over a float condensate trap to the condensate collection tank or into a second recovery steam unit.



### ■ Additional Equipment

- Condensate trap
- Steam chamber vent
- Gate valve
- Dirt strainer
- Safety valve

## RIFOlift

Pressure operated pump

### ■ Usage

For transporting condensates, oil or other liquids, also those with a high solid content.

The pumping process begins as soon as a certain level has been reached in the pump and stops automatically if no condensate arises. The pump can be driven by steam, gases or compressed air.

### ■ Pressure range

PN 16 at 250°C,  
Motiv pressure 0.5 to 8.6 bar

### ■ Connection size

Weld neck flange:  
DN 25 to DN 80

### ■ Housing material

Carbon steel / NIRO 1.4571 / 1.4581

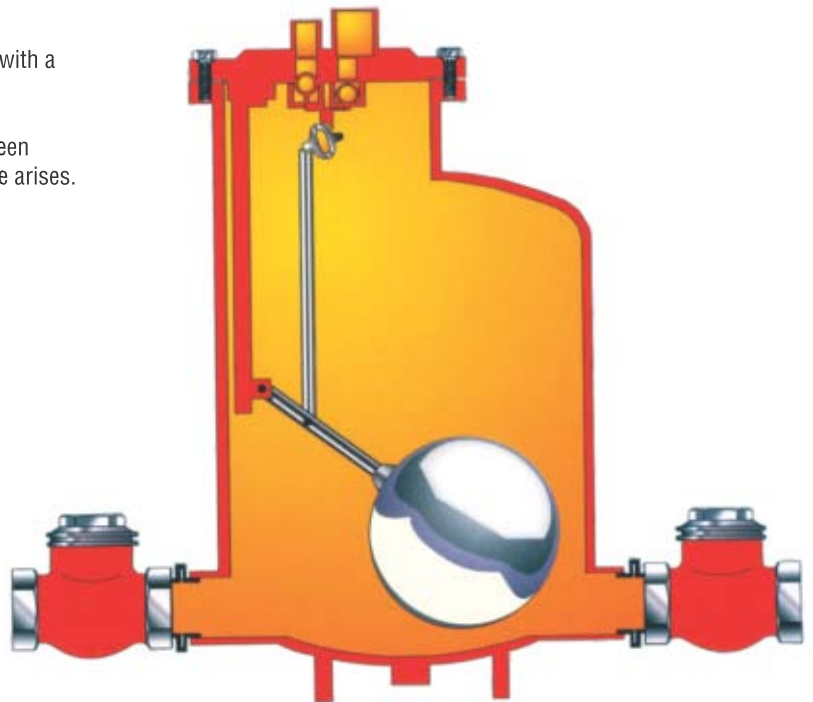
### ■ Capacity

Up to 5 t/h

### ■ Function

The liquid flows by gravitational force through the non-return valve in the pump. This causes the float to be lifted. A valve is opened at a certain upper level via a link through which the motive gas can flow. The pressure created pushes the liquid into the pump through the output non-return valve. If the float reaches its lowest point due to the level dropping then the motive gas valve is closed so that more condensate can flow into the pump.

The fact that the volume per ejection is fixed means that the amount transported per hour can be determined exactly by using a counter.

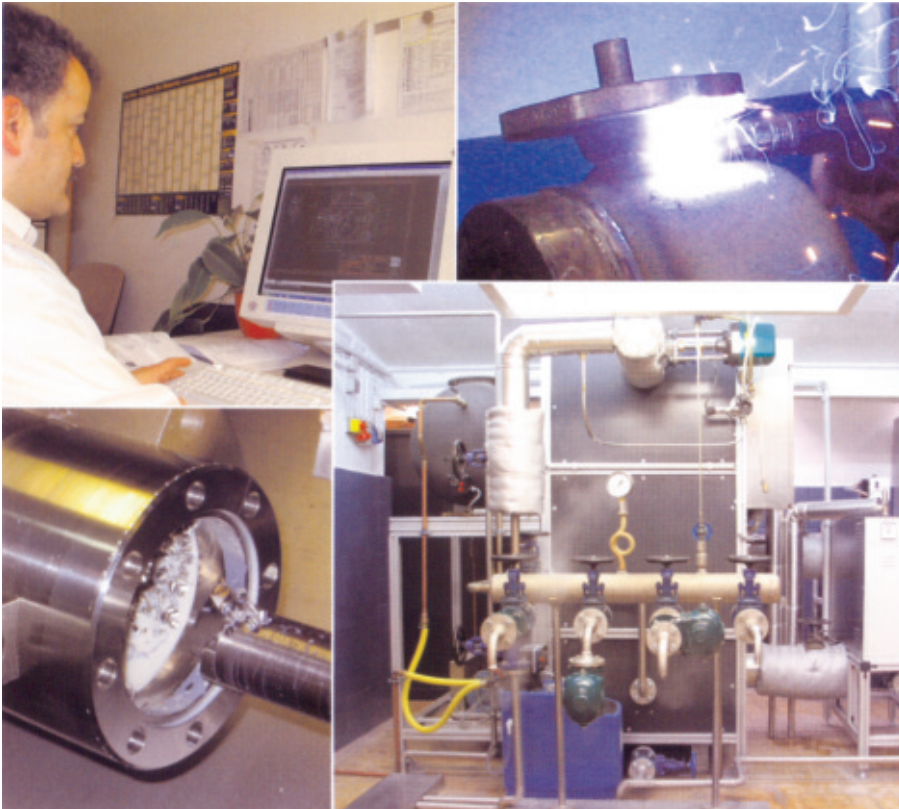


### ■ Additional equipment

- Gate valve
- Dirt strainer
- Condensate trap
- Filling level indicator
- Counter

### ■ Comment

- No cavitation
- Energy saving - very little steam consumption
- Also suitable for liquids containing solids
- Can also be delivered with a ready-to-operate station with collector and fittings
- Extremely robust



Manufacture and  
maintenance

Advising and  
appraising

Continuous development work, a qualified manufacturing process and technologically high quality products are the basis for our activities. Service and advising are cornerstones of the services we offer!

Presentations and trainings, such as function control of condensate traps at our own in-house test stands can be conducted on request.

We would also be happy to make a presentation about our high quality fittings. Please feel free to contact us or our local agent.

We can even inform you about the economic aspects of using condensate. Minimisation of steam losses and maintenance costs are our goal.



## Water vapor tabel State of saturation (pressure tabel)



Pressure bar abs P.	Temperature °C	Spezific Volume of water dm <sup>3</sup> /kg v'	Spezific Volume of steam m <sup>3</sup> /kg v''	Density of steam kg/m <sup>3</sup> Y	Enthalpy of water kJ/kg h'	Enthalpy of steam kJ/kg h''	Heat of vaporization kJ/kg r	Entropy of water kJ/kg grd s'	Entropy of steam kJ/kg grd s''
1,0	99,632	1,0434	1,694000	0,5904	417,51	2675,4	2257,9	1,3027	7,3598
1,5	111,37	1,0530	1,159000	0,8628	467,13	2693,4	2226,2	1,4336	7,2234
2,0	120,23	1,0608	0,885400	1,1290	504,70	2706,3	2201,6	1,5301	7,1268
2,5	127,43	1,0675	0,718400	1,3920	535,34	2716,4	2181,0	1,6071	7,0520
3,0	133,54	1,0735	0,605600	1,651	561,43	2724,7	2163,2	1,6716	6,9909
3,5	138,87	1,0789	0,524000	1,908	584,27	2731,6	2147,4	1,7273	6,9392
4,0	143,62	1,0839	0,462200	2,163	604,67	2737,6	2133,0	1,7764	6,8943
4,5	147,92	1,0885	0,413800	2,417	623,16	2742,9	2119,7	1,8204	6,8547
5,0	151,84	1,0928	0,374700	2,669	640,12	2747,5	2107,4	1,8604	6,8192
6,0	158,84	1,1009	0,315500	3,170	670,42	2755,5	2085,0	1,9308	6,7575
7,0	164,96	1,1082	0,272700	3,667	697,06	2762,0	20644,9	1,9918	6,7052
8,0	170,41	1,1150	0,240300	4,162	720,94	2767,5	2046,5	2,0457	6,6596
9,0	175,36	1,1213	0,214800	4,655	742,64	2772,1	2029,5	2,0941	6,6192
10,0	179,88	1,1274	0,194300	5,147	762,61	2776,2	2013,6	2,1382	6,5828
11,0	184,07	1,1331	0,177400	5,637	781,13	2779,7	1998,5	2,1786	6,5497
12,0	187,96	1,1386	0,163200	6,127	798,43	2782,7	1984,3	2,2161	6,5194
13,0	191,61	1,1438	0,151000	6,617	814,70	2785,4	1970,7	2,2510	6,4913
14,0	195,04	1,1489	0,140700	7,106	830,08	2787,8	1957,7	2,2837	6,4651
15,0	198,29	1,1539	0,131700	7,596	844,67	2789,9	1945,2	2,3145	6,4406
16,0	201,11	1,1586	0,123700	8,085	858,56	2791,7	1933,2	2,3436	6,4175
17,0	204,31	1,1633	0,116600	8,575	871,84	2793,4	1921,5	2,3713	6,3957
18,0	207,11	1,1678	0,110300	9,065	884,58	2794,8	1910,3	2,3976	6,3751
19,0	209,80	1,1723	0,104700	9,555	896,81	2796,1	1899,3	2,4228	6,3554
20,0	212,37	1,1766	0,099540	10,050	908,59	2797,2	1888,6	2,4469	6,3367
21,0	214,85	1,1809	0,094890	10,540	919,96	2798,2	1878,2	2,4700	6,3187
22,0	217,24	1,1850	0,090650	11,030	930,95	2799,1	1868,1	2,4922	6,3015
23,0	219,55	1,1892	0,086770	11,520	941,60	2799,8	1858,2	2,5136	6,2849
24,0	221,78	1,1932	0,083200	12,020	951,93	2800,4	1848,5	2,5343	6,2690
25,0	223,94	1,1972	0,079910	12,510	961,96	2800,9	1839,0	2,5543	6,2536
26,0	226,04	1,2011	0,076860	13,010	971,72	2801,4	1829,6	2,5736	6,2387
28,0	230,05	1,2088	0,071390	14,010	990,48	2802,0	1811,5	2,6106	6,2104
30,0	233,84	1,2163	0,066630	15,010	1008,40	2802,3	1793,9	2,6455	6,1837
32,0	237,45	1,2237	0,062440	16,020	1025,40	2802,3	1776,9	2,6786	6,1585
34,0	240,88	1,2310	0,058730	17,030	1041,80	2802,1	1760,3	2,7101	6,1344
36,0	244,16	1,2481	0,055410	18,050	1057,60	2801,7	1744,2	2,7401	6,1115
38,0	247,31	1,2451	0,052440	19,070	1072,70	2801,1	1728,4	2,7689	6,0896
40,0	250,33	1,2521	0,049750	20,100	1087,40	2800,3	1712,9	2,7965	6,0685
45,0	257,41	1,2691	0,044040	22,710	1122,10	2797,7	1675,6	2,8612	6,0191
50,0	263,91	1,2858	0,039430	25,360	1154,50	2794,2	1639,7	2,9206	5,9735
55,0	269,93	1,3023	0,035630	28,070	1184,90	2789,9	1605,0	2,9757	5,9309
60,0	275,55	1,3187	0,032440	30,830	1213,70	2785,0	1571,3	3,0273	5,8908
65,0	280,82	1,3350	0,029720	33,650	1241,10	2779,5	1538,4	3,0759	5,8527
70,0	285,79	1,3513	0,027370	36,530	1267,40	2773,5	1506,0	3,1219	5,8162
75,0	290,50	1,3677	0,025330	39,480	1292,70	2766,9	1474,2	3,1657	5,7811
80,0	294,97	1,3842	0,023530	42,510	1317,10	2759,9	1442,8	3,2076	5,7471
85,0	299,23	1,4009	0,021930	45,610	1340,70	2752,5	1411,7	3,2479	5,7141
90,0	303,31	1,4179	0,020500	48,790	1363,70	2744,6	1380,9	3,2867	5,6820
95,0	307,21	1,4351	0,019210	52,060	1386,10	2736,4	1350,2	3,3242	5,6506
100,0	310,96	1,4526	0,018040	55,430	1408,00	2727,7	1319,7	3,3605	5,6199
110,0	318,05	1,4887	0,016010	62,480	1450,60	2709,3	1258,7	3,4304	5,5595
120,0	324,65	1,5268	0,014280	70,010	1491,80	2689,2	1197,4	3,4972	5,5002
130,0	330,83	1,5672	0,012800	78,140	1532,00	2667,0	1135,0	3,5616	5,4408
140,0	336,64	1,6106	0,011500	86,990	1571,60	2642,4	1070,7	3,6242	5,3803
150,0	342,13	1,6579	0,010340	96,710	1611,00	2615,0	1004,0	3,6859	5,3178
160,0	347,33	1,7103	0,009308	107,400	1650,50	2584,9	934,3	3,7471	5,2531
170,0	352,26	1,7696	0,008371	119,500	1691,70	2551,6	859,9	3,8107	5,1855
180,0	356,96	1,8399	0,007498	133,400	1734,80	2513,9	779,1	3,8765	5,1128
190,0	361,43	1,9260	0,006678	149,800	1778,70	2470,6	692,0	3,9429	5,0332
200,0	365,70	2,0370	0,005877	170,200	1826,50	2418,4	591,9	4,0149	4,9412
210,0	369,78	2,2015	0,005023	199,100	1886,30	2347,6	461,3	4,1048	4,8223
220,0	373,69	1,6714	0,003728	269,300	2011,10	2195,6	184,5	4,2947	4,5799

Please copy and fax to:

**+49 421 - 499 75 40**

Inquiry

- RIFOmat** Steam Traps
- RIFObi** Bi-Metal Steam Traps
- RIFOka** Capsule Steam Trap
- RIFOjet** Jet Steam Trap
- RIFOlevel** Drain and Feed control
- RIFOdry** Fine dryer and Separator
- RIFOair** Vent Valves
- RIFOlift** Condensate Pumps
- RIFOplus** Steam tracing valve

Quantity

RIFOX data-sheet

**Process datas:**

Initial pressure	<input type="text"/>	p in bar
Pressure stage	<input type="text"/>	PN
Pressure difference	<input type="text"/>	Δp in bar
Temperature	<input type="text"/>	°C
Capacity	<input type="text"/>	Kg/h
Medium	<input type="text"/>	

**Execution datas:**

Connections	<input type="text"/>	
Flow direction	Horizontal	Vertical
	Angle	<input type="text"/>

Housing material

Venting	Manual	Interior
	Automatic	Exterior

Certificates

Remarks, Scheme:

Contact person

Division / Position

Company

Address

Country Code / Country

Phone

Fax

E-mail



**RIFOX - Hans Richter GmbH Spezialarmaturen**

D-28082 Bremen • Postfach 11 02 45 • Telefon +49 421/4 99 75-0 • Fax +49 421/499 75-40  
www.rifox.de • contact@rifox.de

# RIFOX - Hans Richter GmbH Spezialarmaturen

## An excerpt from our reference list



Agents and distributors:

- Austria, Belgium, Denmark, Finland, India, Italy, Japan, Korea, Malaysia, Netherlands, New Zealand, Norway, Peru, South Africa, Sweden, Switzerland, Thailand, Turkey, Ukraine

Virgo and RIFOX production plants:

- RIFOX Germany, RIFOX India, Virgo India, Virgo Italy, ViNtrol USA, EVS USA